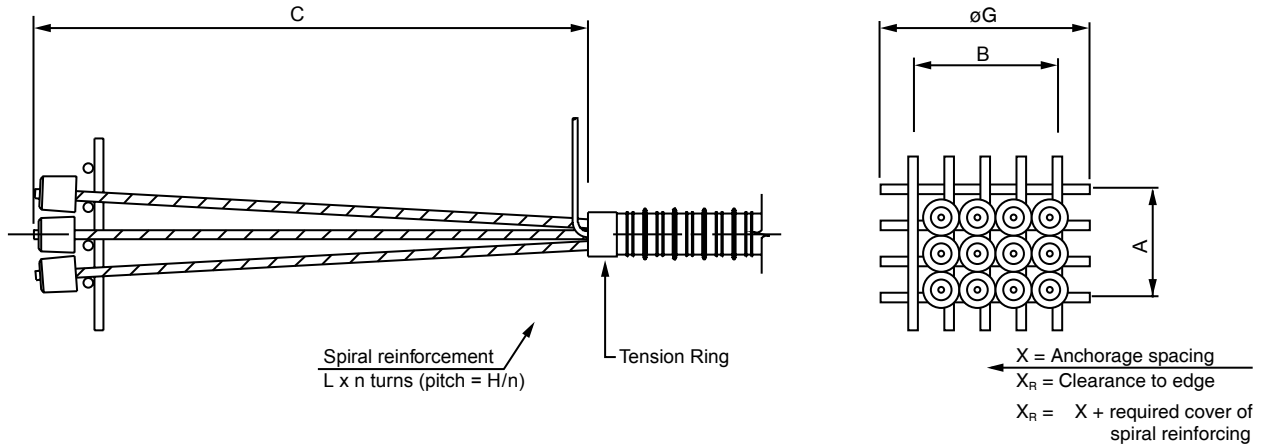
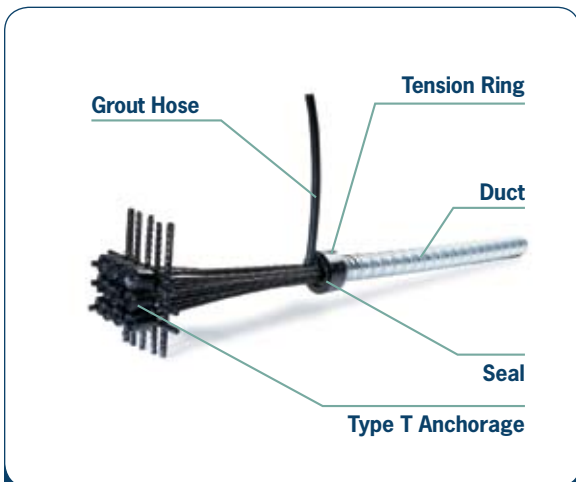


# Type T Dead-End Anchorage



Tendon Unit		Dimensions (Inches)				
		A	B	C	øG	X
0.5" Strand	5-12	6.60	8.80	36.00	11.75	12.50
	5-19	11.00	11.00	36.00	15.00	15.75
	5-31	16.00	11.00	36.00	19.00	20.00
0.6" Strand	6-7	6.75	6.75	36.00		12.50
	6-12	6.75	6.00	36.00		15.75
	6-19	9.00	11.25	36.00		20.00



**Notes:**

- Anchorage spacings are in accordance with test requirement of AASHTO (The Special Anchorage Device Acceptance Test Procedure, AASHTO 2000).
- For proper design and detailing of anchorage zones and related reinforcement, refer to the VSL Publication *Detailing for Post-Tensioning*.

**Dimensions are valid for:**

- Nominal minimum concrete cylinder strength at 28 days: 4000 psi (28 MPa).
- Maximum prestressing force may be applied when concrete reaches a cylinder strength of 3,500 psi (24 MPa).
- Temporary overstressing to 80% of Guaranteed Ultimate Tensile Strength.
- Information for other concrete strength and conditions are available from your local VSL Representative.

www.vsl.net • 888-489-2687