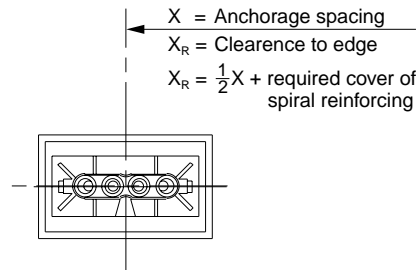
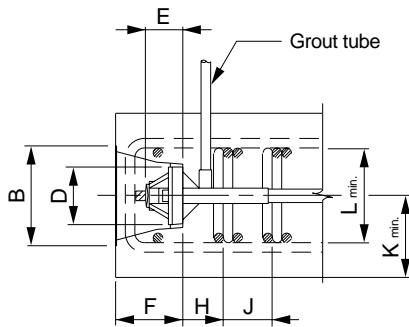
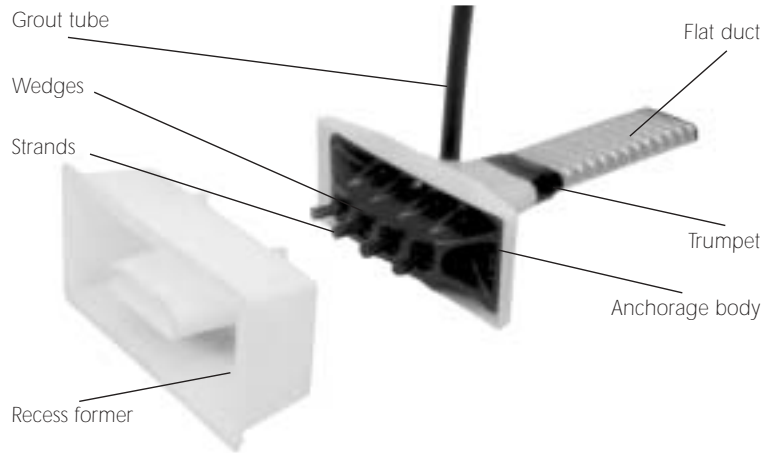
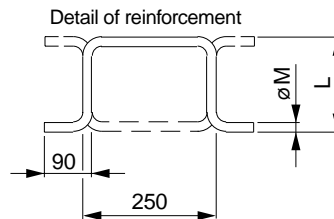
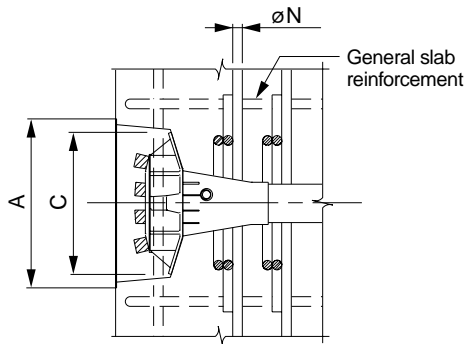


Stressing Anchorage VSL Type SO



For proper design and detailing of anchorage zones and related reinforcement, refer to the VSL Publication "Detailing for Post-Tensioning". The arrangement shown here is common for slabs in buildings.



Type	A	B	C	D	E	F	H ²	J	K _{min}	L _{min} ³	M	N	X
6-4 ¹	13.00	6.62	11.25	4.90	3.00	5.00	K-1.2	3.00	4.75	1.5 x K	#4	#5	13.88

Other sizes available on request

Subject to modification

For proper design and detailing of anchorage zones and related reinforcement, refer to the VSL Publication "Detailing for Post-Tensioning".

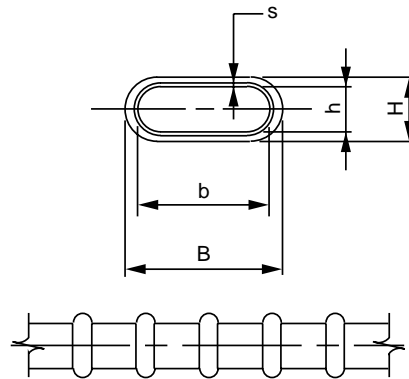
Dimensions in inches.

Dimensions are valid for:

- Nominal concrete cylinder strength at 28 days: 4,000 psi (28 MPa).
- Maximum prestressing force may be applied when concrete reaches a cylinder strength of 80% of its nominal strength or 3,500 psi (24 MPa) whichever is less.

- Temporary overstressing to 80% of Guaranteed Ultimate Tensile Strength.
 - Information for other concrete strengths and conditions are available from your local VSL Representative.
- Anchorage may be used with 0.5" (12.7 mm) or 6" (15.2 mm) strand.
 - Use actual K when calculating H.
 - L shall be the maximum permitted by the slab thickness and cover, whereas $L_{min} = 1.5 \times K$.

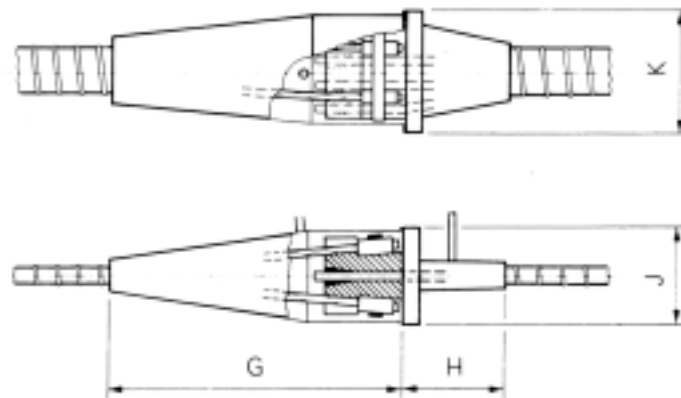
Dimensions of Ducts



	Tendon unit	h	H	b	B	s
Plastic duct PT-PLUS™	5-2, 6-2	0.75	1.18	1.65	2.09	0.08
Plastic duct PT-PLUS™	5-4, 6-4	0.83	1.38	2.83	3.39	0.08
Steel duct	5-4, 6-4	0.71	0.83	2.83	2.95	0.01

Dimensions in inches.

Coupler VSL Type SK

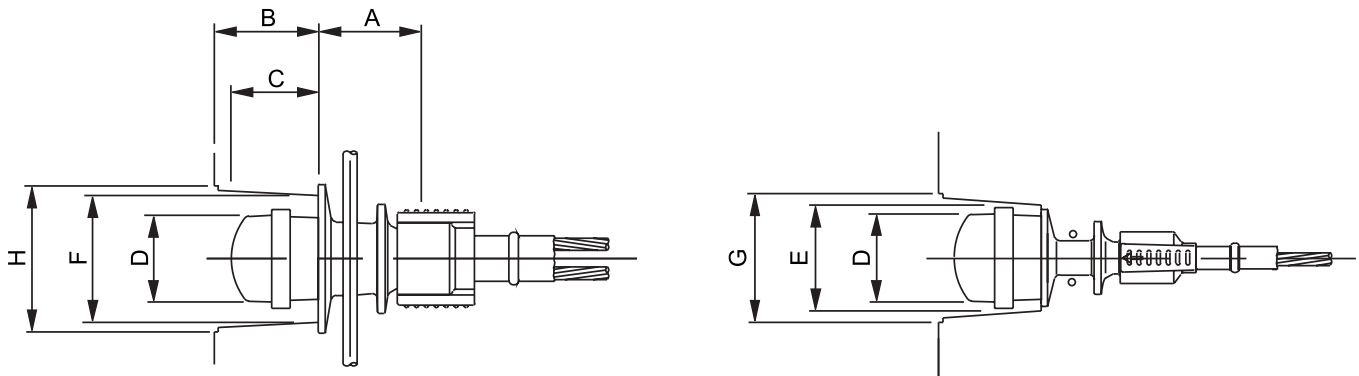


Type	G	H	J	K
SK 5-4	16.06	5.91	5.51	6.69

Dimensions in inches.

Dimensions are valid for nominal concrete strength: 20 MPa (cube), 16 MPa (cylinder), at the time of stressing, for a maximum stressing force of 80% of the tendon breaking load.

VSLAB[®]+ Stressing Anchorage

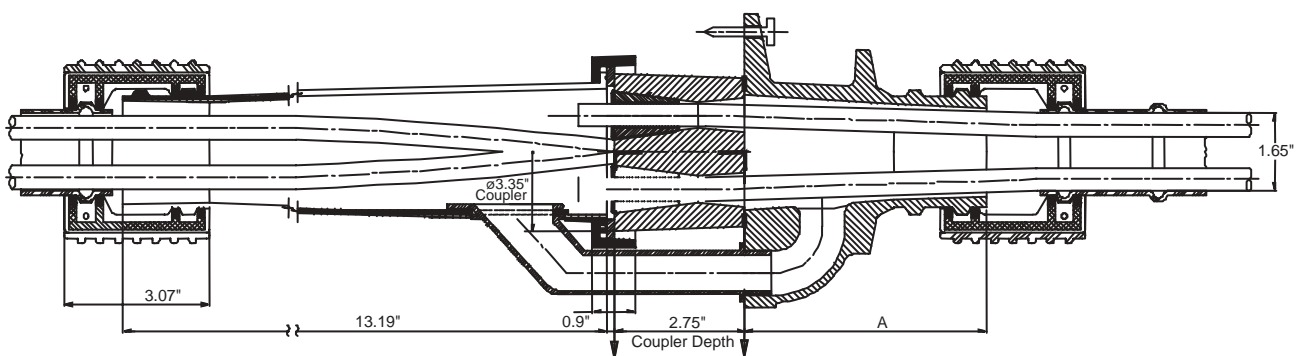


Type	A	B	C	D	E	F	G	H
VSLAB	5.12	4.13	3.27	3.07	4.02	5.63	4.72	6.42

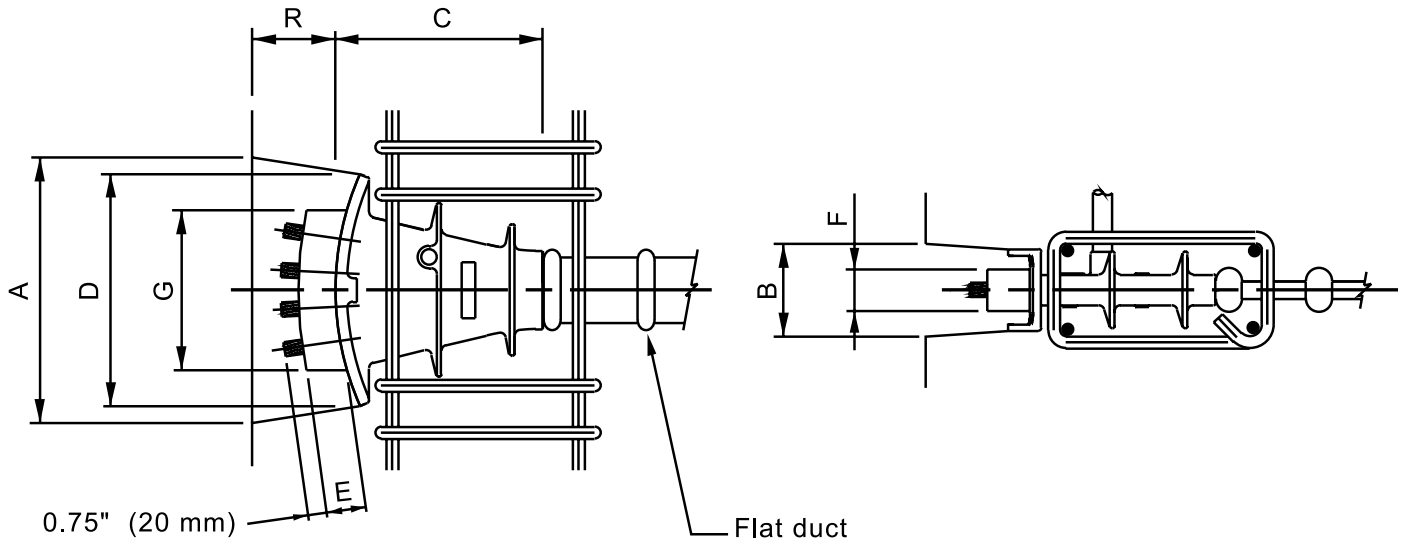
Dimensions in inches.

Dimensions are valid for nominal concrete strength: 3,000 psi (20 MPa) cylindrical strength, at the time of stressing, for a maximum stressing force of 80% of the tendon breaking load.

VSLAB[®]+ Intermediate Anchorage



Stressing Anchorage VSL Type SA



Type	A	B	C	D	E	F	G	R
SA5-4	10.42	3.70	8.50	9.75	1.75	1.96	6.75	4.33
SA5-5	10.42	3.70	8.50	9.75	1.75	1.96	8.25	4.33
SA6-4	10.42	3.70	8.50	9.75	2.24	2.64	7.51	4.33

Other sizes available on request

Subject to modification

For proper design and detailing of anchorage zones and related reinforcement, refer to the VSL Publication "Detailing for Post-Tensioning".

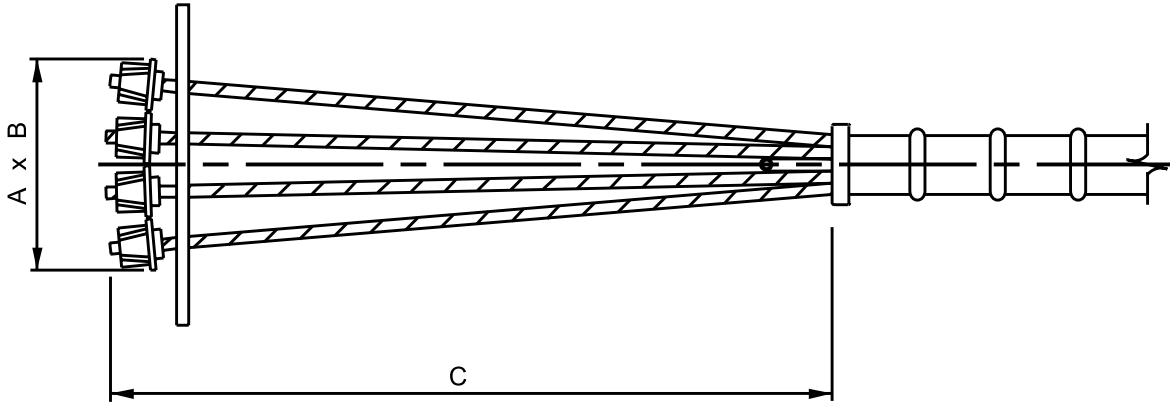
Dimensions in inches.

Dimensions are valid for:

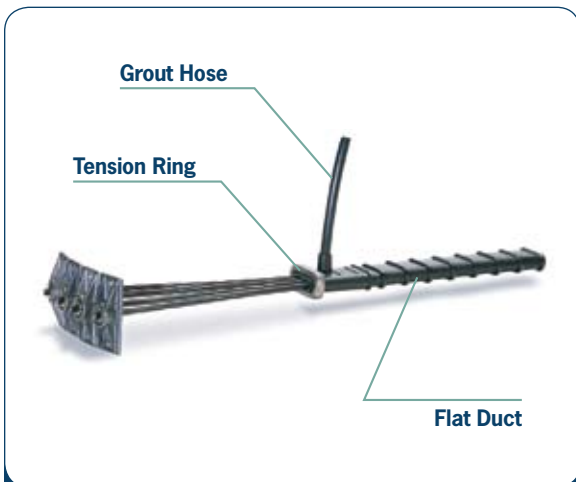
- Nominal concrete cylinder strength at 28 days: 4,000 psi (28 MPa).

- Maximum prestressing force may be applied when concrete reaches a cylinder strength of 80% of its nominal strength or 3,000 psi (20 MPa) whichever is less.
- Temporary overstressing to 80% of Guaranteed Ultimate Tensile Strength.
- Information for other concrete strengths and conditions are available from your local VSL Representative.

Type N Stressing Anchorage



Type	Dimensions (Inches)		
	Vertical		
	A	B	C
N 5-4	9.75	5	36
N 5-5	12.25	5	36
N 6-4	14.00	6	36



Notes:

- Other sizes available on request.
- For proper design and detailing of anchorage zones and related reinforcements, refer to the VSL Publication *Detailing for Post-Tensioning*.
- Tension ring required.

Dimensions are valid for:

- Nominal concrete cylinder strength at 28 days: 4000 psi (28 MPa).
- Maximum prestressing force may be applied when concrete reaches a cylinder strength of 80% of its nominal strength or 3,000 psi (20 MPa) whichever is less.
- Temporary overstressing to 80% of Guaranteed Ultimate Tensile Strength.
- Information for other concrete strength and conditions are available from your local VSL Representative.

www.vsl.net • 888-489-2687